

SUPPLIES

Autoclavable Instrument Pouches

- Best quality transparent FDA and ADA approved pouch at an economical price!
- Pouches are "self-seal" for easy closure and to save time.
- Color changes on indicator after autoclaving.
- Packs of 200 pouches per size.

SPECIAL
Buy 10 of Any Size
Get Another Pack
FREE

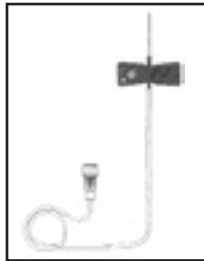


Cat. No.	SIZE	PRICE
810-001	2 1/4" x 5"	4.95
810-002	2 3/4" x 10"	5.50
810-003	3 1/2" x 6 1/2"	5.30
810-004	3 1/2" x 10"	5.50
810-006	4 1/4" x 12"	9.30
810-007	5 1/4" x 11"	9.95
810-008	7 1/2" x 13"	19.50
810-009	12" x 18"	64.95

Winged Infusion Sets

- Siliconized 3/4" needles with short bevels and three facet points to minimize chance of vein perforation during insertion.
- Kink resistant 12 inch PVC tubing.
- Sterilized with Ethylene gas; latex and pyrogen free.
- 100 pieces per box.

Gauge	100 pack
19	857-019
21	857-021
23	857-023
25	857-025



1 to 2 boxes - **\$40.00 each**
3 to 4 boxes - **\$35.00 each**
5 plus boxes - **\$30.00 each**

Safety Infusion Sets

- Same item as Winged Infusion Set, but with addition of safety tube to hold withdrawn needle.
- On withdrawal from vein, 3/4" needle slides into unique locking safety tube to minimize chance of operator injury.
- Kink resistant 12 inch PVC tubing.
- Sterilized with Ethylene gas; latex and pyrogen free.
- 100 pieces per box.

1 to 2 boxes - **\$90.00 each**
3 to 4 boxes - **\$85.00 each**
5 plus boxes - **\$80.00 each**

Gauge	100 pack
19	857-119
21	857-121
23	857-123
25	857-125



1. Before removing needle from vein, remove tape from butterfly and slide safety tube down over butterfly.



2. Gently pull PVC tubing to withdraw needle and butterfly into safety tube where they will lock.

Aspirating Syringe - Astra Type

- Astra type aspirating local anesthetic syringe.

Cat. No. 876-101

1 to 4 - **\$12.00 each**
5 to 9 - **\$11.00 each**
10 plus - **\$10.00 each**



876-101

Aspirating Syringe - Cooke-Waite

- Cooke-Waite type aspirating local anesthetic syringe.

Cat. No. 876-102

1 to 4 - **\$12.00 each**
5 to 9 - **\$11.00 each**
10 plus - **\$10.00 each**



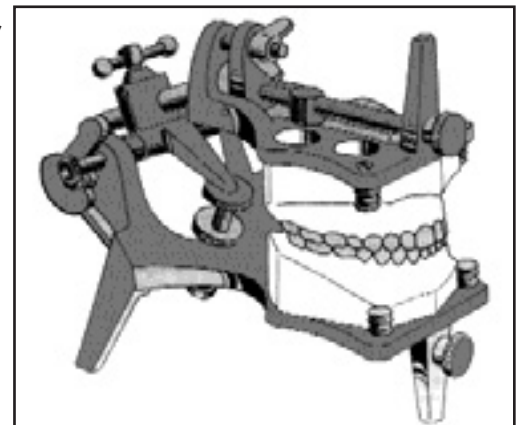
876-102

Adjustable

- Models are easily, quickly, and firmly mounted on articulator.
- Does not require plaster or any other accessories.
- Provides full range of adjustable jaw motion.
- Ideal for instant set-up and occlusal check such as orthognathic surgery.
- Appliances like splints and nightguards can be processed directly on articulator.

CAT. NO. 846-440

1 - **\$185.00**



Intra Ligament Syringe

- A unique syringe for intraligament, intrapulpal, and intraosseous injection of carpule anesthetics.
- Unique ratchet design allows for dispensing minute amounts of anesthetic under high pressure resulting in profound anesthesia with little or no discomfort.
- Allows one tooth anesthesia eliminating the lip, tongue and cheek anesthesia of blocks.
- Available in either "pistol" style or hand held model.

Cat. No. 861-103 Intra Ligament Syringe - "pistol" style - **\$77.00 each**

Cat. No. 861-104 Intra Ligament Syringe - hand held model **\$79.00 each**



876-104

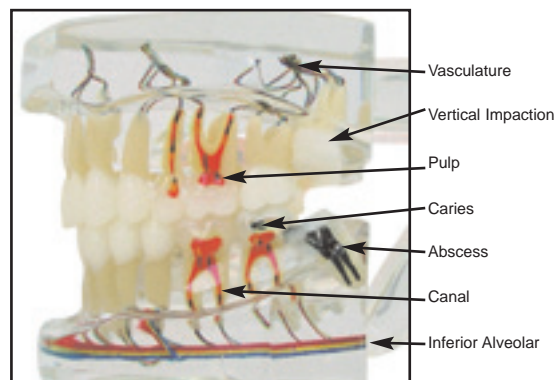
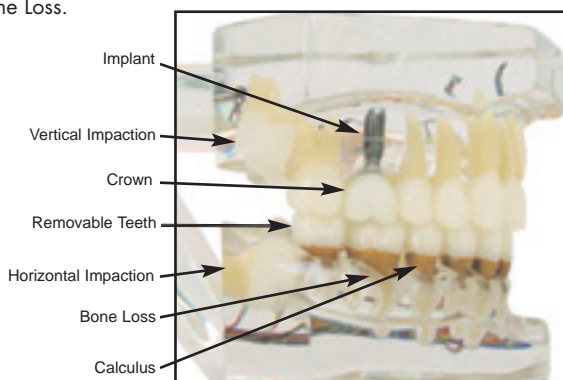
876-103

Implant/Third Molars/Pathology Model

- Beautifully articulated Implant/Pathology model.
- Maxillary Right Molar Implant and Crown.
- Four Impacted Third Molars.
- Removable Teeth with Calculus and Bone Loss.
- Pulp and Root Canal anatomy.
- Decay and Pulpal Abscess.
- Suggested Vasculature.

Cat. No. 840-186 **1 - 145.00**

**BUY 5 OR MORE
IMPLANT MODELS
for only
125.00 EACH**



Very Appreciated Gifts
for Referring Dentists

Topical Anesthetic 30 gm jars

Let your patients choose their favorite flavor from these six delicious topical anesthetic gels. Apply the 20% benzocaine gel to mucous membranes with a cotton applicator to produce rapid and profound topical anesthesia in about ten seconds.

SPECIAL - all six flavors

Cat. No. 588-607 **\$18.00**

588-601	Mint	30 ml jar
588-602	Bubble Gum	30 ml jar
588-603	Banana	30 ml jar
588-604	Strawberry	30 ml jar
588-605	Piña Colada	30 ml jar
588-606	Cherry	30 ml jar

1 - 3.50 each



Six Delicious Topical Anesthetic Gels

Excel Slow Speed Handpieces

Our Micromotor revolving at 5,000 to 20,000 rpm will cover all your slow speed needs. The Latch Contra Angle and Straight Handpiece can be run forward and reverse. All parts are autoclavable. An external water cooling line can be attached to either head.

874-524	Micromotor 4 hole	1 - 148.00	3 - 141.00
874-522	Micromotor 2 hole	1 - 148.00	3 - 141.00
874-531	Latch Contra Angle	1 - 95.00	3 - 90.00
874-532	Straight Handpiece	1 - 110.00	3 - 100.00



Straight Handpiece Attachment



Latch Contra Angle

**SPECIAL
SLOW SPEED HANDPIECE
PLUS STRAIGHT AND CONTRA
\$325**



Micromotor 5,000 to 20,000 rpm

Light Curing Unit

- Rapid and complete curing with 75 watt, 12 volt halogen lamp.
- Autoclavable light guide with 360° turn.
- Individual curing times with beep tone.
- Automatic fan to prevent bulb burn out.
- Available 110 or 220 volt.

110 volt - CAT. NO. 855-380

220 volt

LIST \$399

**SPECIAL
\$299.00**



Caries Development Model

- Contains four large removable hemisectioned teeth in sturdy base.
- Teeth open into 2 parts showing enamel, dentin and pulp.
- Demonstrates: (1) No Caries; (2) Incipient Enamel Caries; (3) Dentin Caries; and (4) Pulp Exposure.



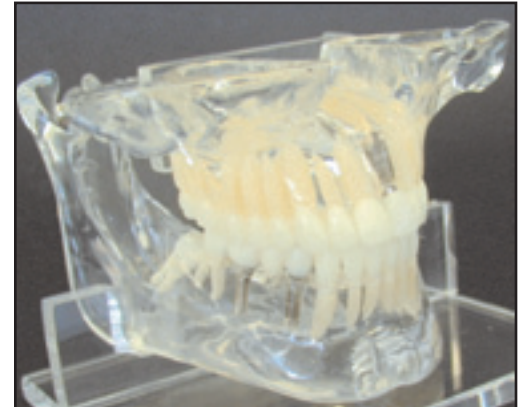
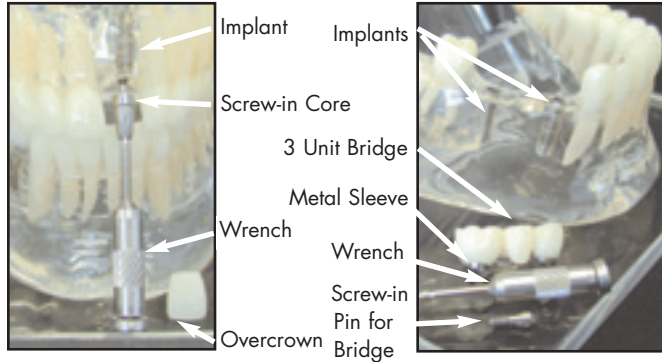
Caries Development Model 840-185 **1 - 140.00**

**5 OR MORE
for only
95.00 EACH**

EDUCATION MODELS

Life-Size Crown & Bridge Implant Model

- Unique anatomic implant model on base with complete mandible and condyles, hinged maxilla which opens, maxillary sinus, zygoma, and nasal floor.
- Clear plastic allows total visualization of teeth and roots so that patient can appreciate anatomic considerations for implant placement.
- Upper Left Central Implant has removable core which unscrews plus esthetic overcrown.
- Lower Right Three Unit Bridge has two implants which hold prosthesis by two removable screws. Crowns have metal sleeves to guide screws into implants. Wrenches are extra.



Crown and Bridge Implant Model 840-180 **1 - 255.00**

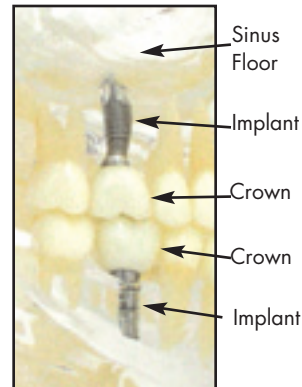
- 1. Completely transparent maxilla and mandible show implants.**
- 2. Maxillary implant has screw-in core plus esthetic overcrown.**
- 3. Mandibular bridge held by 2 implants plus removable screws.**

Life-Size Upper and Lower First Molar Implants and Crowns

- Unique anatomic implant model on base with complete mandible and condyles, hinged maxilla which opens, maxillary sinus, zygoma, and nasal floor.
- Clear plastic allows total visualization of teeth and roots so that patient can appreciate anatomic considerations for implant placement.
- Upper Right and Lower Right First Molar implants with Crowns in Ideal Occlusion.
- The need for adequate bone as well as anatomic limitations can easily be shown to patients.



- 1. Transparent maxilla and mandible show implants.**
- 2. First Molar Implants and Crowns in perfect occlusion.**
- 3. Patients can understand the need for adequate bone.**



First Molar Implant Model 840-183 **1 - 255.00**

LIFE-SIZE IMPLANT MODELS:

1. Full Maxilla - Maxillary Sinus, Nasal Floor, Zygoma.
2. Full Mandible - Lingula, Mental Foramen, Condyles, Inferior Alveolar.
2. Articulated Hinge - Ideal Class I Occlusion.
3. Large Clear Acrylic Base.

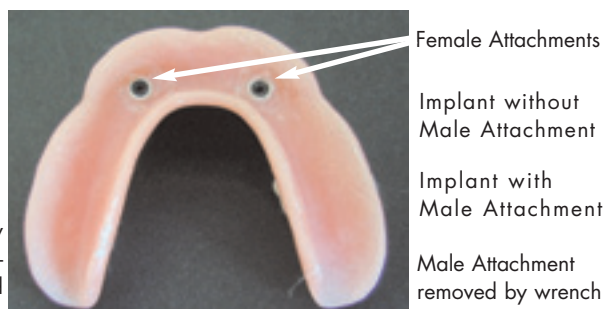
Over Denture Implant Model

- Clear mandibular model with two implants in cuspid areas.
- Complete mandibular denture with embedded female attachments that snap fit onto male attachments which are screwed into implants.

Cat. No. 840-181 **1 - 220.00**

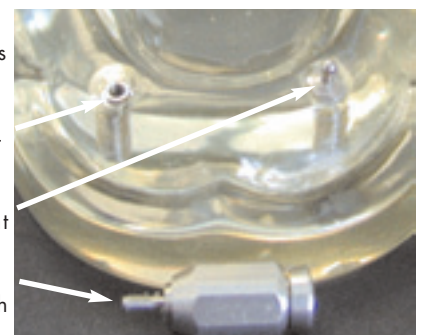


Custom Over Denture is firmly held on model by attachments and implants. Patient can practice removing prosthesis to appreciate the secure retention and stability patient desires for his lower denture.



Over Denture Implant Model:

- 1. Provides patient the opportunity to test security and stability of implant prosthesis.**
- 2. Appliance can be removed to appreciate the frictional fit of male and female attachments.**



Labial and Palatal Impacted Cuspids with Gold Buttons and Chain

- Labial and Palatal impacted cuspids with bonded gold buttons are both demonstrated on the same model.
- Full arch orthodontic appliance with cuspids tied to archwire.
- Complete root model demonstrates surgical and orthodontic treatments.

Cat. No. 840-121

1 - 195.00

Demonstrates the surgical attachments and also the orthodontic procedure for treating impacted cuspids.



Cuspid Root
Bonded Gold Button with Chain
Elastic thread to Gold Chain
Space holding archwire

Cat. No. 840-121 Labially impacted cuspid with bonded Gold Button and Chain tied to archwire.



Cat. No. 840-121 Palatally impacted cuspid with bonded Gold Button and Chain tied to archwire.

Space holding archwire
Elastic thread to Gold Chain
Bonded Gold Button with Chain
Cuspid Root



Cat. No. 840-121 Articulated Impacted Cuspid Model with labial and palatal bonded Gold Buttons with Chain and orthodontic appliance.

Impacted Third Molar Model

- Class I Ideal model to demonstrate the need for and technique of removal of impacted third molars.
- Four Impacted Third Molars easily seen in beautiful clear anatomic model on base.
- Full Maxilla with Nasal Cavity, Maxillary Sinuses and Zygomas.
- Mandible articulates and can be totally removed from model for lingual visualization.

Patients can instantly understand the need for removal of Impacted Third Molars to maintain their ideal occlusions.



Maxillary Vertical Impaction
Mandibular Horizontal Impaction



Impacted Third Molar Model
Articulated Mandible Can Be Removed



Impacted Third Molar Model
Cat. No. 840-190 **1 - \$245.00**



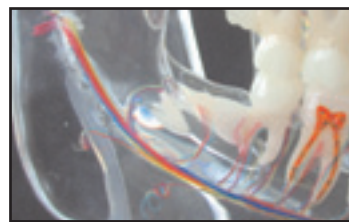
Maxillary Vertical Impaction
Mandibular 45° Impaction

Vascular Models

- Demonstrate artery, vein and nerve innervation of the bone and teeth.
- Excellent for explaining anesthetic techniques, surgery and pain.
- Shows direct pathway from periapical area into the pulp.
- Large model includes movable full mandible with lingula and inferior alveolar artery, vein and nerve.



Small Vascular Model
Cat. No. 840-131 **1 - 145.00**



Ramus of Large Vascular Model
Cat. No. 840-132



Large Vascular Model
Cat. No. 840-132 **1 - 245.00**

ANATOMIC IMPLANT MODELS

Consultations will have meaning and be accepted when patients can see and touch similar problems.

Life-Size Crown and Bridge Implant Model with Vasculature

- Unique anatomic implant model on base with complete mandible and condyles, hinged maxilla which opens, maxillary sinus, zygoma, and nasal floor.
- Clear plastic allows total visualization of teeth and roots so that patient can appreciate anatomic considerations for implant placement.
- Upper Left Central Implant has removable core which unscrews plus esthetic overcrown.
- Lower Right Three Unit Bridge has two implants which hold prosthesis by two removable screws. Crowns have metal sleeves to guide screws into implants. Wrenches are extra.



Nasal Floor
3 Unit Bridge
Implant
Implants
Post Mental Foramen
Crown Inferior Alveolar



Crown and Bridge Implant Model 840-182 **1 - 295.00**

These spectacular articulating anatomic models with the maxillary sinus and vasculature allow patient to "see" what you are explaining to them. The implants with single and multiple crowns and bridge show them the advantages of implant dentistry over traditional tooth preparation and bridges.

Life-Size Upper and Lower First Molar Implants and Crowns with Vasculature

- Unique anatomic implant model on base with complete mandible and condyles, hinged maxilla which opens, maxillary sinus, zygoma, and nasal floor.
- Clear plastic allows total visualization of teeth and roots so that patient can appreciate anatomic considerations for implant placement.
- Upper Right and Lower Right First Molar implants with Crowns in ideal occlusion.
- The need for adequate bone as well as anatomic limitations can easily be shown to patients.



Sinus Floor
Implant
Crown
Crown
Implant



Molar Vascular Implant Model 840-184 **1 - 295.00**

LIFE-SIZE IMPLANT MODELS:

1. Full Maxilla - Maxillary Sinus, Nasal Floor, Zygoma.
2. Full Mandible - Condyles, Mental Foramen, Inferior Alveolar.
3. Articulated Hinge - Ideal Class I Occlusion.
4. Large Clear Acrylic Base.

SPECIAL
BOTH ANATOMIC IMPLANT
MODELS (List \$590.00)
with VASCULATURE
for only
\$490.00

ORTHO SOURCE

13343 Sherman Way
North Hollywood, California 91605

PRSR STD.
US POSTAGE
PAID
No. Hollywood, CA
Permit #155