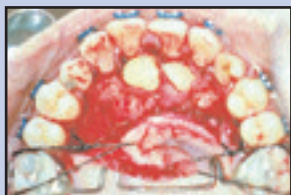


# TREATMENT FLOW FOR CUSPID BONDING

## Pre-Bonding Initial Steps are the same for Self-Cure or Light-Cure



1. PREPARATION. Tie the flap as far away from the surgical field as possible. Post-operative pain usually comes from traumatized tissue and its resulting swelling.



2.. ETCHING. Use Green Etch as a hemostatic. Flood the entire operative field for 30 seconds and then suction away the green etch, Reflood for an additional 30 seconds and suction away. Keep repeating this procedure several more times until the green etch stays bright green around the edges and does not turn black (the black areas are active bleeding sites.).



3. DRYING. Suction away the bulk etch, wash gently with water, and carefully dry with air, avoiding splattering any fluids back onto the cleaned tooth surface. Then using a hair drier on "Low," wave the drier back and forth over the tooth for a full 5 seconds. This eliminates all the micro-moisture that might interfere with bonding.

"Success in Cuspid Bonding comes from the elimination of variables which will result in a reliable and repeatable technique. Searching for the "Magical Adhesive" is not the solution; rather, it is the attention to detail which will eliminate failures.



Oral Surgeons by nature and training work quickly. Bonding is a meticulous technique where each step must be completed totally and in proper sequence. Without proper Retraction, Hemostasis is almost impossible; and without Hemostasis, Drying is impossible. Without a bone dry field (for Self Cure) or relatively dry field (for Light Cure which is a wet or dry field bonding adhesive and can tolerate moderate moisture) produced by using a hair drier, bonding may be compromised.

Dr. Lloyd R. Taylor

### Self-Cure System



Self Cure SuperBond Instant Kit Cat. No. 557-764

4. SELECT ATTACHMENT. Any attachment is acceptable with Self Cure adhesives. Orthodontists are used to Gold Buttons with Chain. Either of the Swivels - Eyelet or Disk - will also be excellent and eliminate the need to check for a path of insertion.



5. PRIMER. Apply 1/2 drop to the center of the bonding area and spread with the needle tip. Leave a dry area - a 2 mm circle or "moat" - around the Primer to avoid contamination by fluids in the sulcus or by fluids in the follicle behind the tooth. Apply another 1/2 drop of Primer to the back or attachment and spread with needle tip.



6. ADHESIVE. Apply Adhesive to the back of the attachment. Immediately place attachment over Primer area on tooth. Press center of attachment firmly against tooth with tweezer for 10 seconds.



### Light-Cure System



Light Cure CuspidBond Kit Cat. No. 557-754

4. SELECT ATTACHMENT. Only the Gold Mesh Disk should be used with a Light Cure system in order for the light to cure all the resin. If a solid attachment is chosen, the only cured material will be that plastic extruded around the attachment.

5. PRIMER. Apply 1/2 drop to the center of the bonding area and spread with the needle tip. Leave a dry area - a 2 mm circle or "moat" - around the Primer to avoid contamination by fluids in the sulcus or from fluids in the follicle behind the impacted tooth.

6. ADHESIVE. Apply Adhesive to the back of the attachment. Immediately place attachment over Primer area on tooth. Press center of Gold Disk Attachment firmly against tooth with tweezer; you will see that the Adhesive will flow into Mesh of Gold Disk in several areas. Immediately light cure for 10 seconds.

# GOLD CUSPID ATTACHMENTS with CHAIN

## Gold Swivels with Chain

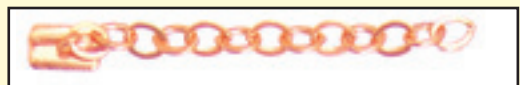
The Gold Swivel allows the chain to rotate a full 360° around the attachment, eliminating the need to plan a path of insertion before bond placement. No matter where the Swivel is placed, the Gold Chain can be tied wherever desired.

The Gold Swivel also facilitates easy attachment placement. The Micro Tweezer tip will fit securely into the Swivel giving total control of the attachment.



**Gold Mesh Disk Cat. No. 248-065**

The Gold Mesh Disk is the only attachment appropriate to use with a light cure system. The bonding resin will be totally cured since the curing light will reach all the adhesive. If a solid bond is used with a light cure system, the resin under the bond will never cure. In addition the Gold Mesh Disk can easily be cut or bent to fit any size surface add the retention of bonding to a proximal edge.



**Gold Eyelet Cat. No. 248-075**

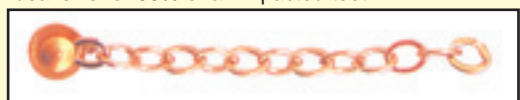
The Gold Eyelet is the perfect attachment for use with Self Cure systems. The Swivel provides 360° rotation of the Gold Chain while the light weight pad provides superb bonding retention and will stay exactly where placed as the resin self cures.

## Gold Buttons and Cleat with Chain



**Standard 5 mm Gold Button Cat. No. 248-025**

The Standard 5 mm Gold Button with Chain has been the most requested cuspid attachment by orthodontists for over 20 years. The 5 mm Button is the ideal size for 95% of all impacted teeth.



**Mini 4 mm Gold Button Cat. No. 248-055**

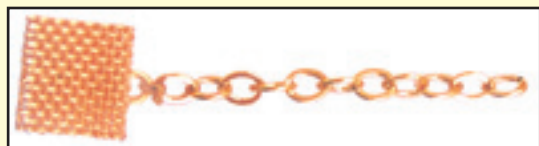
The Mini 4 mm Gold Button with Chain is needed for those teeth where the entire lingual or labial surface can not be exposed. While the base is only 65% of the bonding surface of a 5 mm Button, the 4 mm Button is adequate for cuspid traction.



**Gold Cleat Cat. No. 248-015**

The Gold Cleat was the original cuspid attachment and is still requested.

## Gold "V" Mesh with Chain



**Gold "V" Mesh Cat. No. 248-035**

The Gold "V" Mesh is an extra heavy mesh which can be cut to any size or shape and will retain that shape. Although usable in every situation, it is ideal for bonding to incisal tips or proximal edges.

## GOLD CUSPID ATTACHMENTS with CHAIN

as low as

**\$ 10<sup>00</sup>** each

**1 to 4 - \$15.00 each**

**5 to 9 - \$14.00 each**

**10 to 19 - \$13.00 each**

**20 to 49 - \$12.00 each**

**50 plus - \$10.00 each**

### MIX STYLES FOR QUANTITY PRICE



**SWIVEL** - allows the chain to rotate a full 360° around the bond eliminating the need to identify a path of insertion before bond placement. Micro Tweezer tip fits into Swivel to give accurate placement control.



**GOLD MESH PAD** - can easily be cut to any fit any available bonding surface with a wire cutter or strong scissors. The Mesh can also be adapted to any curvature or even bent over a proximal edge.



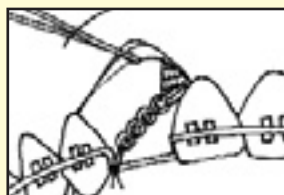
**STANDARD 5 mm GOLD BUTTON** - This attachment has been preferred by orthodontists for over 20 years. The Button is the ideal size for the lingual surface of most impacted cuspids and is easy to place using the Mini Tweezer.



**MINI 4 mm GOLD BUTTON** - This attachment is excellent in limited spaces providing adequate bonding surface for the adhesive. The Mini Tweezer fits under the Button and provides secure control.



**GOLD CLEAT** - was the first attachment used for impacted cuspids and is still in use today. Orthodontists like the high cleat wings which are easy to tie for final extrusion.



**GOLD "V" MESH with Chain** has been cut and contoured to fit over the barely visible incisal cusp tip of an impacted cuspid. Although the labial area is tiny, the combined surfaces of the entire tip is sufficient for bonding and subsequent traction. Here the chain has been tied with elastic thread for eruption and distalization.