

CUSPIDBOND SYSTEM

Light Cure CuspidBond Adhesive System

1. GOLD MESH DISKS - Perfect for Light Cure and Self Cure Systems

Gold Mesh Disks are ideal for light cure bonding since the open mesh provides for total light curing of the resin, resulting in maximum bond strength. Buttons or brackets made of solid metal prevent the light curing of all the resin under the attachment. The only cured light cure resin with a solid attachment is the extruded resin around the edges, rarely sufficient to retain the attachment. Gold Mesh Disks have the following advantages:

- Size - the 5 mm disk is the ideal size for almost all bonding procedures.
- Curing - the open mesh allows for the total light curing of the adhesive. Mesh Disks also work well with self-cure systems like SuperBond Instant.
- Adaptation - Using a plier, the Gold Mesh Disk can be bent over proximal tooth edges to increase bonding retention.
- Trimming - the mesh can be cut with a heavy wire cutter to fit the shape of any available bonding surface.
- 360° Rotation - the gold chain can rotate a full 360°, eliminating the concern about chain direction.
- Eyelet - the eyelet has the perfect opening to fit in the tip of a Mini Bonding Tweezer tip for secure grip and perfect placement.



Gold Mesh Disk

Cat. No. 248-065

1 to 4 - \$15.00 each

5 to 9 - \$14.00 each

10 to 19 - \$13.00 each

20 to 49 - \$12.00 each

50 plus - \$10.00 each

- 100% Bonding Success
- Highest Bond Strength
- Wet or Dry Field

FEATURES:

1. Ideal mesh for light cure and self cure.
2. Full 360° rotation of chain.
3. Perfect pick-up through eyelet.
4. Easily trimmed to any size.
5. Can be bent over proximal edges.



Tweezer fits into eyelet for total control of attachment.

2. CuspidBond PRIMER - Wet or Dry Field

CuspidBond Primer can be applied to wet or dry etched enamel surfaces. If the enamel is dry, apply the Primer and immediately place the Gold Mesh Disk with **CuspidBond Adhesive**, and then light cure. If the enamel is wet, the Primer will mix with and evaporate any remaining moisture, leaving a dry surface for the adhesive. With the blue applicator tip, try to place the Primer exactly where the bonding will take place. Do not allow excess Primer to flow into the sulcus or behind the tooth where excess moisture may be present and will track along the Primer back onto the etched enamel surface. If the surface is obviously wet, allow 5 to 15 seconds for the Primer to remove the moisture before placing the Adhesive. NOTE: Any residual blood on the etched enamel surface will prevent the Primer from entering the enamel prisms and prevent locking and curing into the undercut surface. Blood is not a "wet surface," but instead a contaminant. All blood must be removed from the bonding surface.

TIP We strongly recommend using the Mini Dryer, even after air drying the etched enamel, in order to remove all possible residual moisture. While this step is critical in the use of self-cure adhesive systems such as SuperBond Instant, it certainly does no harm even with a system like CuspidBond that is not moisture sensitive. Driving away any peripheral moisture with the Mini Dryer will eliminate another failure variable.



FEATURES:

1. Eliminates all residual moisture.
2. Easy to use needle applicators.



Applicator allows easy placement of Primer in any location.

3. CuspidBond ADHESIVE

Using the white applicator tip, extrude the **CuspidBond Adhesive** over the entire surface of the Gold Mesh Disk. Using the tip of the needle, press the adhesive into the mesh all around the edges. Try to avoid pushing adhesive through the center where it might cover the attachment of the chain to the disk. The Adhesive is moisture sensitive and can only be placed on the tooth surface after the Primer has removed all residual moisture.



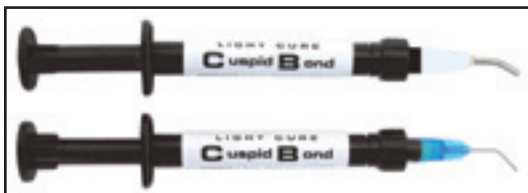
TIP The Adhesive on the back of the Gold Mesh Disk can be prepared in advance in order to reduce operatory time. While holding the Gold Mesh Disk with a Mini Bonding Tweezer in the eyelet, extrude the Adhesive onto the back of the mesh and push the adhesive through the mesh as desired. Turn the Tweezer and Mesh Disk with the Adhesive upside down on the bracket table and cover with a piece of black paper or plastic. The will prevent the polymerization of the light sensitive resin until you are ready to place the attachment.

FEATURES:

1. Strongest bonding composite.
2. Easy to use needle applicators.
3. No-mix light cure system.



Adhesive flows onto and locks into Mesh Disk.



Light Cure CuspidBond Kit Cat. No. 557-754

CuspidBond Kit - Primer, Adhesive & Applicators

Cat. No. 557-754

1 or 2 - \$65.00 each

3 or 4 - \$60.00 each

5 plus - \$55.00 each

Cuspid Bond Primer only - Cat. No. 557-755 - \$35.00 each

CuspidBond Adhesive only - Cat. No. 557-756 - \$35.00 each

CuspidBond Kits with Gold Mesh Disks and Accessories

1. Introductory Kit: A sample kit to get started

Cat. No. 557-751

1 CuspidBond kit

- 1 CuspidBond Primer Syringe
- 1 CuspidBond Adhesive Syringe

10 Primer Applicators

10 Adhesive Applicators

- 1 Green Syringe Etch & 25 tips
- 6 Gold Mesh Disks with Gold Chain

Value \$172.00

Price **\$135.00**

2. Office Kit: An adequate supply of items

Cat. No. 557-752

1 CuspidBond kit

10 Primer Applicators

10 Adhesive Applicators

2 Green Syringe Etch & 25 tips

18 Gold Mesh Disks with Gold Chain

- 1 Long Mini Bonding Tweezer
- 1 Curved 45° Mini Bonding Tweezer
- 1 Clear Elastic Thread 25 ft.(7.5m)
- 1 Adult Lip Retractor
- 1 Tongue Block set

Value \$389.00

Price **\$295.00**

3. Complete Start-Up Kit - Everything needed.

Cat. No. 557-753

2 CuspidBond kits

20 Primer Applicators

20 Adhesive Applicators

4 Green Etch Syringes & 25 tips

30 Gold Mesh Disks with Gold Chain

- 1 Short Mini Bonding Tweezer
- 1 Long Mini Bonding Tweezer
- 1 Angled 30° Tweezer
- 1 Curved 45° Mini Bonding Tweezer
- 1 Bayonet Mini Bonding Tweezer
- 1 Clear Elastic Thread 50 ft (15m)
- 1 Adult Lip Retractor
- 1 Tongue Block set

Value \$727.00

Price **\$499.00**

20% Savings

Kits offer substantial discounts over item pricing

25% Savings

30% Savings

Light Cure CUSPID BOND TECHNIQUE SUGGESTIONS

1. Uncovering - Slow and meticulous technique in raising the palatal flap and tying it back will be rewarded with minimal post-operative discomfort for the patient.
2. Hemostasis - Green Phosphoric Acid Etch is the easiest and most effective way to achieve hemostasis. Flood the entire operative field - tooth, bone, soft tissue - with Green Etch which is the best color for contrast. Note that the edges of the etch turn black where bleeding is continuing. Leave etch for 30 seconds and then suction away the etch. Repeat this procedure over and over until the etch margins remain green, proof that hemostasis is complete.
3. Washing - Suction away the etch and then gently wash away any residual etch with water. Do not wash away the large amount of etch, since this will only splatter the etch all over.
4. Drying - Place the tip of the air syringe directly on the etched enamel surface and gently release the air to dry the tooth. Air released from a distance results in splatter on the tooth surface. Even though

CuspidBond is a "wet field" adhesive system, we still strongly recommend drying the enamel with a Mini Dryer prior to bonding.

5. Primer - Place 1 drop of liquid in the center of the bonding area and spread it around with the needle tip. Try to leave a "moat" of at least 1 to 2 mm of dry tooth between the Primer and the sulcus. If the Primer flows into the sulcus, it will serve as a conduit for all the fluid in the sulcus and perhaps in the follicle beneath the tooth!
6. Adhesive - Cover the entire back of the Gold Mesh Disk with Adhesive and press it into the mesh with the applicator tip. Place the attachment on the tooth surface and seat firmly against the tooth. "Tack cure" the adhesive for 5 seconds with the light, remove tweezer, then complete 20 to 40 seconds of light cure depending on the strength of your light..



1. Pre-Surgery. Both impacted cuspids can be palpated palatal to the maxillary centrals.



2. Incision. A full thickness flap is incised 2 teeth distal to both deciduous cuspids.



3. Elevation. Use the fine point of a periosteal elevator to lift the flap without tearing.



4. Elevation. Use the large end of the periosteal elevator to raise the periosteum cleanly off the entire palate.



5. Retraction. Tie back the flap on both sides to the molars to eliminate retraction trauma.



6. Bulk Etch. Apply green phosphoric acid etch to the entire surgical field as a cauterizing hemostatic.



7. Suction Etch. Leave etch for 30 seconds, suction away, and reapply until hemostasis is complete.



8. Wash. Use gentle water to remove residual etch. Be careful not to restart bleeding.



9. Air Drying. Place tip of air syringe directly on enamel and gently release air in order to dry, but not splatter.



10. Mini Dryer. On "Low," move Mini Dryer over tooth to be bonded for 5 seconds to eliminate all moisture.



11. Primer. Using needle applicator, apply one drop of Primer and spread it over entire surface to be bonded.



12. Pick Up. Tip of Mini Tweezer fits into eyelet of Gold Mesh Disk, providing precise control for placement and bonding.



13. Adhesive. Determine path of insertion and apply adhesive with needle applicator pushing adhesive into mesh.



14. Placement. Press Mesh Disk firmly against enamel surface; adhesive should extrude around and through mesh.



15. Light Cure. "Tack Cure" for 5 seconds, remove Micro Tweezer, then complete light cure for 20 to 40 seconds.



16. Bonded. The Gold Mesh Disk is firmly bonded to the tooth surface. The gold chain swivels on the eyelet.



17. Re-etch. The enamel surface of the second cuspid may have been contaminated by fluids and must be re-etched.



18. Trimming. The second cuspid has a very small area for bonding and therefore 1/2 the Mesh Disk is cut away.



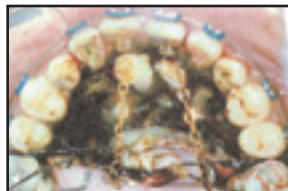
19. Insertion. 45° Mini Tweezer provides the best access to the path of insertion for the 1/2 Gold Mesh Disk.



20. Adhesive. Holding trimmed Mesh Disk with the Mini Tweezer, the CuspidBond Adhesive is applied.



21. Positioning. Place the Mesh Disk exactly where desired, cure for 5 seconds, remove tweezer, and final cure.



22. Completion. Now when bleeding is of no consequence, remove teeth and cut eruption channels if desired.



23. Tie Chain. Cut chain to reach arch-wire and tie to bond with silk suture.



24. Suture. Reposition palatal flap and place interproximal sutures.

SUPERBOND INSTANT SYSTEM

SuperBond Instant Self Cure Adhesive System

1. ADHESIVE - 10 Second Contact Bonding

SuperBond Instant 10 Second Contact is the only adhesive specifically formulated to bond attachments to impacted teeth. It will out perform all composites, glass ionomer and light cure for working time, strength, ease of mixing and a simple rapid delivery system. **SuperBond's** initial set (working time) is only 10 seconds which is even more remarkable when compared to 60 seconds for One-Steps, 104 seconds for Glass Ionomer and 120 seconds for Two Step Composites. Once you try it and appreciate its unique features, you will never use any other product for bonding attachments to impacted teeth.

After applying the **SuperBond Instant** Activator and Adhesive Paste, just hold the attachment firmly against the tooth for the 10 second working time and it is bonded! This rapid working time will help you avoid the bleeding that often interferes with bonding procedures. With a Bonding Strength to Enamel of over 1100 psi (70.3 kg/cm²), **SuperBond Instant** is stronger than all products on the market and will hold attachments in place against all traction forces. After a final set of 3 minutes, you are ready to tie in the attachment before your sutures are placed.



SuperBond Instant out performs all products for strength and ease of application **Cat. No. 557-764**

1 kit - \$ 65.00 each 3 kits - \$ 60.00 each

Makes Bonding to Impacted Cuspid an Easy, Consistent and Profitable Part of Your Practice

"As both an Oral Surgeon and Orthodontist, impacted teeth have been a major interest of mine for many years. My surgery and orthodontics must be perfect since I have no one to blame but myself if things do not work out exactly as planned! These excellent products help to guarantee success for us.



OrthoSource has developed the adhesive, gold attachments and supplies to help you solve these difficult problems. **SuperBond Instant** is the perfect adhesive for these procedures - an amazingly fast 10 second initial set, strong enough to support any elastic traction and in an easy to use delivery system. The three types of gold attachments with and without gold chain cover all bonding possibilities. And there is also an entire line of instruments and accessories. I am pleased to share my techniques with you and welcome your comments."

Dr. Lloyd R. Taylor

2. DELIVERY SYSTEM - Easy To Apply Needle Applicators

The needle applicators allow you to quickly and accurately place the materials exactly where you want them. But before applying **SuperBond Instant**, hold attachment to be bonded in the Mini Tweezer of your choice exactly how you will place it on the tooth. It is best to practice placement at least once before applying bonding adhesives to be certain that the attachment will fit, that there is a path of insertion, and that the chain faces in the correct direction - you will only have 10 seconds of working time after they are applied! Apply Activator to the etched and dried tooth surface and also to the mesh of the attachment, quickly followed by Adhesive to the mesh surface. Press attachment firmly in place for 10 seconds and you are done!



1. Extrude a very small amount of Activator. Using the applicator tip, spread over the exact area to be bonded.



2. Using the needle tip, spread a small amount of Activator over mesh of the attachment to be bonded.



3. Extrude Adhesive over previously applied Activator on back of mesh pad and immediately place attachment.



4. Press attachment firmly into place and hold motionless for 10 seconds. Chain link can be tied in 3 minutes.

3. GOLD ATTACHMENTS - A Specific Size For Each Bonding Situation

Gold attachments with gold chain are both well-tolerated by tissues and attractive. The three attachments - Cleat, Button and Screen Mesh with or without gold chain - will cover all surgical situations. The Cleat is 4 mm in diameter. The Mini Button is 4 mm in diameter and the Standard Button is 5 mm in diameter. For a single labial or palatal tooth surface, select the largest attachment possible allowing for at least a 1 mm border of clear tooth structure around the attachment to prevent sulcus moisture contamination. The chain link opening is the ideal size for elastic thread.

Gold Screen Mesh with or without gold chain is perfect for cases where only small proximal surfaces are available for bonding and a Cleat or Button would be too large. The Gold Screen can be trimmed to any size with the *Optima Wire Cutter* (879-184) and adapted to fit and even wrap around these small corners and edges.

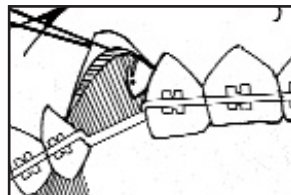


Select the attachment with the largest bonding surface for the tooth.

GOLD SCREEN TECHNIQUE



1. Maxillary Right Cuspid with only 2 mm of exposed labial and lingual bonding surface.



2. Removing additional bone over the labial surface would harm the lateral.



3. Trim Gold Screen into "V" shape to cover available labial and palatal surfaces.



4. Gold Screen with Gold Chain bonded to cuspid is tied with elastic thread for distalization.

4. ACCESSORIES - To Facilitate Hemostasis and Bond Placement

OrthoSource manufactures all the chemicals, instruments and products you require for these techniques such as Green Syringe Etch for maximum visibility in a surgical field as well as producing hemostasis. Mini Tweezers in many styles for the placement of all attachments. The *Optima Wire Cutter* will efficiently trim the Gold Screen and cut the Gold Chain links. Elastic Thread which exactly fits the gold chain links for easy tying. All chemicals, attachments and supplies are available in kits or refill quantities.



DR. TAYLOR'S SUGGESTIONS TO PREVENT BONDING FAILURE

1. Hemostasis - Flood operative field for 30 seconds and then suction away Green Phosphoric Acid Etch. Total hemostasis is when etch remains entirely green for 30 second interval without any black areas.
2. "Bone Dry" Enamel - After etching, suctioning, washing, and air drying, use the Mini Drier. Wave the Mini Drier back and forth across the tooth to be bonded for 5 seconds to eliminate all micro-moisture.
3. Selection - Use the largest attachment possible, but allow at least 1 mm, and preferably 2 mm, of clear space around it. This area serves as a moat to block sulcular fluids which interfere with adhesion.

4. Planning - Plan and practice the path of insertion for the attachment before actually using the adhesive. After the Adhesive touches the Activator on the attachment, you have 10 seconds of Working Time.
5. Pressure - Place the attachment with the Micro Tweezer and then push the attachment tightly against the tooth for 10 seconds to extrude any excess. The thinner the adhesive layer, the stronger the bond.
6. Resin Tags - Should the bond fail, lightly polish the enamel surface with a bur to remove resin tags that might interfere with the next bonding. Re-etch, suction, wash, dry and bond again.
7. Failed Attachments - Do not reuse an attachment that has failed. The mesh surface has been contaminated with fluid, blood, and resin which will only lead to another failure.