

SUPERBOND INSTANT TECHNIQUE

2. Gold Screen with Gold Chain

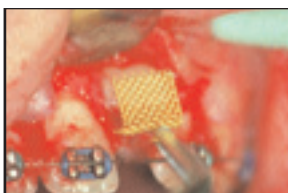
It is no longer necessary to remove large amounts of soft tissue and bone to expose the tooth surface of impacted teeth for bonding attachments. The Gold Screen Mesh can be trimmed to fit any available small tooth surface and then bent to fit and be bonded to an additional adjacent surface forming a "V" for maximum strength. Here the attachment is trimmed to fit as much of the labial surface as available plus an additional 1 mm across the incisal onto the palatal surface forming a "V" for optimal retention. The hook for tying the elastic traction is easily positioned on the palatal side of the tooth to avoid any soft tissue interference after the flap is sutured back into place.



1. Pre-op. The impacted maxillary left central incisor was located both on x-ray and palpated labially.



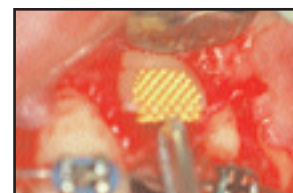
2. Uncovered. Using the usual 2 tooth extension on either side, the tooth was exposed labially and incisally.



3. Planning attachment. The trimming of the Gold Screen Mesh was planned to cover both labial and incisal surfaces.



4. Trimming. The Optima Wire Cutter is the ideal instrument to trim the Gold Screen Mesh.



5. Checking. The attachment is checked to be certain that 1 mm of margin is clear around and that the incisal is also covered.



6. Chemicals. After etch, SuperBond Instant Activator is placed with the needle applicator followed by the Adhesive Paste.



7. Reverse Tweezer. Using the Reverse Tweezer, the attachment is held tightly against the tooth for 10 seconds and then released.



8. Bonded. The adhesive has locked into the Gold Mesh and bonded to the etched tooth surface.



9. Measuring Coil. An open coil spring is placed to both open the space and to serve as an area for tying the elastic thread.



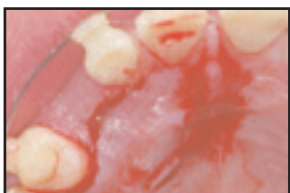
10. Tied-in. The flap has been sutured in place and immediate traction is begun with the elastic thread.

3. Gold Button with Gold Chain

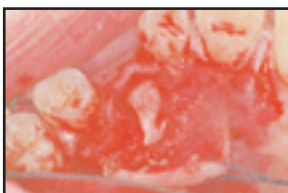
Impacted palatal cusps are the most commonly encountered cases. They can be difficult to bond due to problems of access and hemostasis and orthodontically often must be dragged over relatively large distances. **SuperBond Instant**'s features such as its rapid 10 second initial set will help you avoid the bleeding which will prevent bonding and its amazing strength will hold attachments in place while the tooth is moved for many months. Always select the largest attachment that will fit and be certain to have the option to return at a subsequent appointment to rebond if required by leaving a window. Hemostasis during and after the procedure is critical.



1. Pre-op. Location of impacted maxillary cuspids has been determined by several x-ray views.



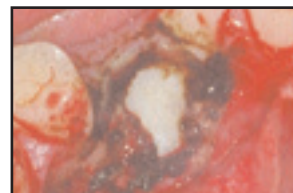
2. Incision. A full thickness palatal flap is made at least 2 teeth mesial and distal to the impacted cuspid.



3. Retraction. In order to minimize trauma to the soft tissue, the flap is tied to the opposite arch.



4. Hemostasis. Green Acid Etch (for contrast) is used to control bleeding. Repeat as needed.



5. Washing and Drying. The etched tooth surface is washed and meticulously dried prior to bonding.



6. Activator. Apply the SuperBond Instant Activator to the dried tooth and mesh of attachment.



7. Adhesive. Place a small amount of SuperBond Adhesive Paste on mesh of attachment on top of Activator.



8. Bonding. Hold for 10 seconds and then wait 3 minutes to tie to archwire.



9. Palatal Window. In case rebonding is required, the palatal tissue over the impacted tooth is removed for later access.



10. Sutures. The flap has been sutured in place after total hemostasis is secured.

SuperBond Instant Kits with Gold Attachments and Accessories

1. Introductory: A sample kit to get started

Cat. No. 557-771

- 1 **SuperBond Instant** kit
- 10 Applicators
- 1 Green Syringe Etch & 25 tips
- 6 Gold Attachments with Chain
 - 4 Gold Standard 5 mm Button with Chain
 - 2 Gold Mini 4 mm Button with Chain

Value \$172.00

Price **\$135.00**

20% Savings

Kits offer substantial discounts over item pricing

2. Operatory: An adequate supply of items

Cat. No. 557-772

- 1 **SuperBond Instant** kit
- 20 Applicators
- 2 Green Syringe Etch & 25 tips
- 18 Gold Attachments with Chain
 - 12 Gold Standard 5 mm Button with Chain
 - 6 Gold Mini 4 mm Button with Chain
- 1 Clear Elastic Thread 25 ft.(7.5m)
- 1 Optima Wire Cutter Plier
- 1 Adult Lip Retractor
- 1 Tongue Block set

Value \$392.50

Price **\$295.00**

25% Savings

3. Surgery office: For all large practices

Cat. No. 557-773

- 2 **SuperBond Instant** kits
- 40 Applicators
- 6 Green Etch Syringes & 50 tips
- 45 Gold Attachments:
 - 30 Gold Standard 5 mm Button with Chain
 - 12 Gold Mini 4 mm Button with Chain
 - 3 Gold Screen Mesh with Chain
- 2 Clear Elastic Thread 25 ft (7.5m)
- 1 Optima Wire Cutter Plier
- 2 Adult Lip Retractor
- 1 Child Lip Retractor
- 1 Tongue Block set

Value \$857.00

Price **\$590.00**

30% Savings