

SuperBond Instant - Self Cure

- Self Cure bonds attachments to impacted teeth in 10 seconds.
- Kit includes 1.2cc Activator syringe and 1.2 cc Adhesive syringe.
- 10 applicator needles.
- Instructions included.

Cat. No. 557-764

1 kit - \$ 65.00 each
3 kits - \$ 60.00 each
5 kits - \$ 55.00 each



SuperBond Kit Cat. No. 557-754

COMPONENTS:

SuperBond Instant Activator only - Cat. No. 557-765 - \$35.00 each

SuperBond Instant Adhesive only - Cat.No. 557-766 - \$35.00 each

CuspidBond - Light Cure

- Light Cure bonds attachments to impacted teeth in 10 seconds.
- Kit includes 1.2cc Primer syringe and 1.2 cc Adhesive syringe.
- 10 applicator needles.
- Instructions included.

Cat. No. 557-754

1 kit - \$ 65.00 each
3 kits - \$ 60.00 each
5 kits - \$ 55.00 each



CuspidBond Kit Cat. No. 557-754

COMPONENTS:

CuspidBond Primer only - Cat. No. 557-755 - \$35.00 each

CuspidBond Adhesive only - Cat.No. 557-756 - \$35.00 each

Gold Chain and Gold Wire

- Gold Chain for cuspid traction.
- 12 " (30 cm) length.

Cat. No. 248-040

45.00 each



Gold Chain Cat. No. 248-040

- Gold Wire for tying attachments.
- 12 " (30 cm) length.

Cat. No. 248-045

10.00 each

12 gm Green Syringe Etch

- For etching - apply to tooth enamel for 30 seconds.
- For hemostasis:
 1. Apply copiously to tooth and all hard and soft tissues for 30 seconds.
 2. Suction all etch away - do not wash.
 3. Reapply etch to entire operative field until edges of etch remain green (not black where bleeding continues).
 4. Suction, wash and meticulously dry.

CAT. NO. 557-618



1 to 9 syringes - \$ 6.00 each

10 + syringes - \$ 5.50 each

Disposable Tips for Etch

- Perfectly fit onto 12 gm etch syringe to provide exact placement of etch.

Cat. No. 557-242

50 tips - \$ 8.00 each

100 tips - \$15.00 each



Autoclavable Lip Retractor

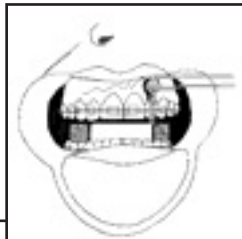
- Retracts lips and cheeks for bonding procedures.
- Soft flexible plastic for patient comfort.
- Autoclavable in paper bag.



Standard Expander
Cat. No. 822-444

Mini Expander
Cat. No. 822-666

1 to 4 expanders - \$ 6.00 each
5 to 9 expanders - \$ 5.40 each
10 + expanders - \$ 5.00 each



Coordinated use of Lip Retractor and Tongue Block

Tongue Block

- Prevents the tongue from interfering when etching and bonding.
- Bite block provides for patient's comfort during long procedures.
- Four assorted sizes per pack.

Cat. No. 822-111

1 to 4 packs - \$ 7.00 each
5 + packs - \$ 6.00 each



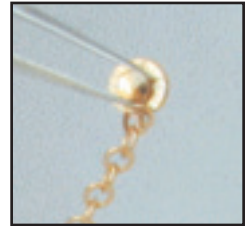
Mini Bonding Tweezers

- Easily picks up and securely holds all attachments.
- 5 different styles cover all placement situations.

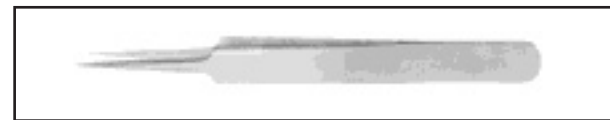
1 to 4 - \$ 22.00 each

5 to 9 - \$ 20.00 each

10 + - \$ 18.00 each



Fine tips securely hold the tiniest attachment



Short - Cat. No. 878-020



Long - Cat. No. 878-021



Angled 30° - Cat. No. 878-022



Curved 45° - Cat. No. 878-023



Bayonet - Cat. No. 878-024

SPECIAL

Cat No 878-030

Five
Tweezers

One
of
each
style

\$ 90.00

ROOT TEASERS and ELEVATORS

Heidbrink Root Tip Teasers

- Unique instruments for teasing out root tips from alveoli and canals.
- Heidbrinks have a special curved point for insertion into the ligament space for gentle lifting.
- Each instrument has a right and left side to work mesially and distally.
- Heidbrinks are NOT ELEVATORS - the fine tips will fracture; use with a gentle lifting and pulling force.
- Instruments with bent or dull tips should be replaced.

Cat. No. 875-001 Heidbrink #1 - 9.50 each
 Cat. No. 875-002 Heidbrink #2 - 9.50 each
 Cat. No. 875-003 Heidbrink #3 - 9.50 each

SPECIAL

1 set 3 Heidbrink
Cat. No. 875-000
One of each size
 List \$28.50 for \$25

SIZE	WIDTH	CAT. NO.
1	1.2 mm	875-001
2	1.5 mm	875-002
3	1.8 mm	875-003



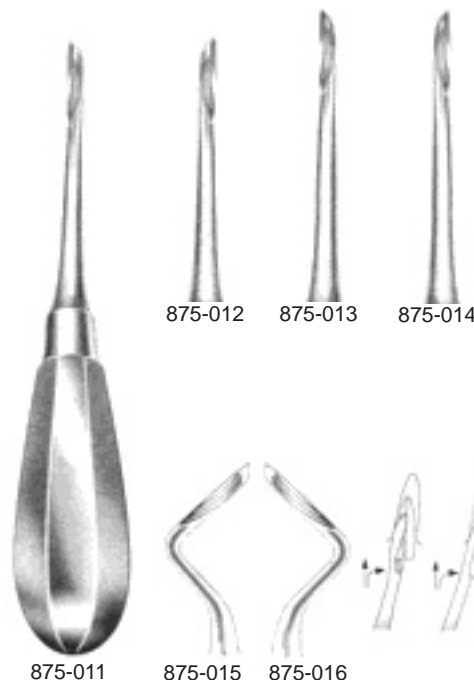
Kopp Elevators

- Ultra thin tip to enter ligament space.
- Razor-sharp tip also used to pierce root tip for extraction.
- Each instrument has a right and left side to work both mesially and distally.
- Place elevator in ligament space and use a circular motion to extract root tip.
- Bent or dull tip instruments should be replaced.

Cat. No. 875-011 Kopp Left - 21.00 each
 Cat. No. 875-012 Kopp Right - 21.00 each
 Cat. No. 875-013 Kopp Left Long - 21.00 each
 Cat. No. 875-014 Kopp Right Long - 21.00 each
 Cat. No. 875-015 Kopp 45° Right - 21.00 each
 Cat. No. 875-016 Kopp 45° Left - 21.00 each

SPECIAL

1 set 6 Kopp
Cat. No. 875-010
One of each style
 List \$160 for \$150



Claw Elevators

- Razor sharp tip for piercing mandibular molar interseptal bone and lifting root tip.
- Each instrument has a right and left side to work both mesially and distally.
- Bent or dull tip instruments should be replaced.

Cat. No. 875-021 Right Hand Claw Elevator - 35.00 each
 Cat. No. 875-022 Left Hand Claw Elevator - 35.00 each

SPECIAL

1 set 2 Claw
Cat. No. 875-020
One of each style
 List \$70 for \$63



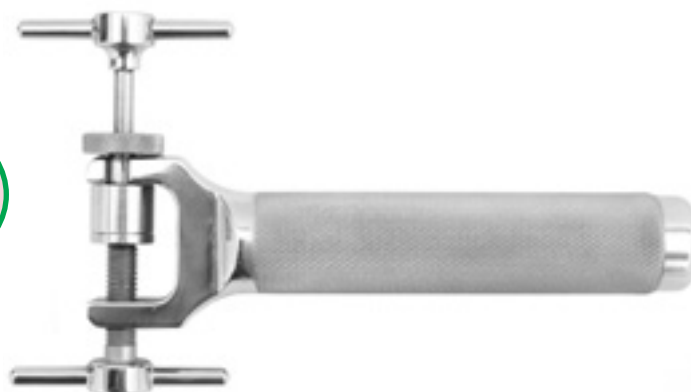
Bone Mill

- A compact quality bone mill that is easy and safe to operate and ECONOMICAL.
- The all stainless steel parts are simple to assemble and completely disassemble in order to autoclave.
- Reduces cortical and cancellous bone to desired particle size by varying gentle hand grinding pressure.
- Resulting bone particles are used for supporting implants, augmentation, and repair.

Cat. No. 875-040 - 350.00 each

SPECIAL

Bone Mill
Totally
Autoclavable



Sutures with Swaged Needles

- Individual packs of sterilized suture material with swaged needle.
- Each sterilized suture pack contained in see through clear sterile envelope.
- 12 suture packs per box.



Silk Black Braided, 12 Packs per Box

ONE BOX 12 SUTURES	6 BOXES EACH AT:	O.S.SOURCE CAT. NO.	SUTURE SIZE	NEEDLE CODE	NEEDLE STYLE	NEEDLE SHAPE	NEEDLE LENGTH	SUTURE LENGTH	LOOK CODE	ETHICON CODE	NEEDLE IMAGE
16.43	15.88	856-101	3-0	C-43	Reverse	1/2 Cir	16 mm	18"	778B	7762	PS-4
16.43	15.88	856-102	3-0	C-9	Reverse	1/2 Cir	23 mm	18"	785B	632G	X-1
16.43	15.88	856-103	3-0	C-6	Reverse	3/8 Cir	18 mm	18"	784B	7772	FS-2
16.43	15.88	856-104	4-0	C-6	Reverse	3/8 Cir	18 mm	18"	781B	683G	FS-2
19.90	19.23	856-105	5-0	C-6	Reverse	3/8 Cir	18 mm	18"	791B	682G	FS-2
44.09	42.61	856-106	4-0	C-3	Reverse	3/8 Cir	13 mm	18"	792B	641G	P-3
44.09	42.61	856-107	5-0	C-3	Reverse	3/8 Cir	13 mm	18"	793B	640G	P-3
19.80	19.14	856-108	3-0	C-7	Reverse	3/8 Cir	24 mm	18"	786B	684G	FS-1
19.80	19.14	856-109	6-0	C-22	Reverse	3/8 Cir	16 mm	18"	790B	1675H	PS-3

Gut Plain, 12 Packs per Box

ONE BOX 12 SUTURES	6 BOXES EACH AT:	O.S.SOURCE CAT. NO.	SUTURE SIZE	NEEDLE CODE	NEEDLE STYLE	NEEDLE SHAPE	NEEDLE LENGTH	SUTURE LENGTH	LOOK CODE	ETHICON CODE	NEEDLE IMAGE
18.49	17.87	856-201	3-0	C-9	Reverse	1/2 Cir	23 mm	18"	594B	612G	X-1
45.99	44.45	856-202	5-0	C-3	Reverse	1/2 Cir	13 mm	18"	596B	686G	FS-2
22.49	21.74	856-203	3-0	C-6	Reverse	3/8 Cir	18 mm	27"	554B	H822G	FS-2
22.49	21.74	856-204	4-0	C-6	Reverse	3/8 Cir	18 mm	27"	551B	H821G	FS-2
18.49	17.87	856-205	4-0	C-6	Reverse	3/8 Cir	18 mm	18"	591B	7771	FS-2

Gut Chromic, 12 Packs per Box

ONE BOX 12 SUTURES	6 BOXES EACH AT:	O.S.SOURCE CAT. NO.	SUTURE SIZE	NEEDLE CODE	NEEDLE STYLE	NEEDLE SHAPE	NEEDLE LENGTH	SUTURE LENGTH	LOOK CODE	ETHICON CODE	NEEDLE IMAGE
22.49	21.74	856-301	3-0	C-6	Reverse	3/8 Cir	18 mm	27"	560B	636G	FS-2
22.49	21.74	856-302	4-0	C-6	Reverse	3/8 Cir	18 mm	27"	559B	635G	FS-2
44.99	43.48	856-303	5-0	C-3	Reverse	3/8 Cir	18 mm	18"	1248B	687G	P-3
22.49	21.74	856-304	3-0	C-6	Reverse	3/8 Cir	18 mm	18"	525B	N/A	FS-2
22.49	21.74	856-305	4-0	C-6	Reverse	3/8 Cir	18 mm	18"	558B	N/A	FS-2

Polyester - Green Braided, 12 Packs per Box

ONE BOX 12 SUTURES	6 BOXES EACH AT:	O.S.SOURCE CAT. NO.	SUTURE SIZE	NEEDLE CODE	NEEDLE STYLE	NEEDLE SHAPE	NEEDLE LENGTH	SUTURE LENGTH	LOOK CODE	ETHICON CODE	NEEDLE IMAGE
31.49	30.44	856-401	5-0	D-14	Dia Point	1/2 Cir	18 mm	18"	797B	N/A	RB-1

Black Mono Nylon, 12 Packs per Box

ONE BOX 12 SUTURES	6 BOXES EACH AT:	O.S.SOURCE CAT. NO.	SUTURE SIZE	NEEDLE CODE	NEEDLE STYLE	NEEDLE SHAPE	NEEDLE LENGTH	SUTURE LENGTH	LOOK CODE	ETHICON CODE	NEEDLE IMAGE
29.65	28.66	856-501	6-0	C-22	Reverse	3/8 Cir	16 mm	18"	915B	6665G	FS-1
28.95	27.98	856-502	5-0	C-6	Reverse	3/8 Cir	18 mm	18"	918B	661G	FS-2
28.80	27.83	856-503	4-0	C-6	Reverse	3/8 Cir	18 mm	18"	922B	662G	FS-2
28.95	27.98	856-504	3-0	C-7	Reverse	3/8 Cir	24 mm	18"	925B	663G	FS-1
60.53	58.50	856-505	5-0	C-3	Reverse	3/8 Cir	16 mm	18"	1285B	698G	PS-3

Polypropylene, 12 Packs per Box

ONE BOX 12 SUTURES	6 BOXES EACH AT:	O.S.SOURCE CAT. NO.	SUTURE SIZE	NEEDLE CODE	NEEDLE STYLE	NEEDLE SHAPE	NEEDLE LENGTH	SUTURE LENGTH	LOOK CODE	ETHICON CODE	NEEDLE IMAGE
46.30	44.75	856-601	6-0	C-22	Reverse	3/8 Cir	16 mm	18"	N/A	N/A	FS-1
46.30	44.75	856-602	5-0	C-6	Reverse	3/8 Cir	18 mm	18"	1018B	8661G	FS-2
46.30	44.75	856-603	4-0	C-6	Reverse	3/8 Cir	18 mm	18"	1022B	8683G	FS-2
46.30	44.75	856-604	3-0	C-7	Reverse	3/8 Cir	24 mm	18"	N/A	8664G	FS-1

Coated Vicryl Type - Violet Braided, 12 Packs per Box

ONE BOX 12 SUTURES	6 BOXES EACH AT:	O.S.SOURCE CAT. NO.	SUTURE SIZE	NEEDLE CODE	NEEDLE STYLE	NEEDLE SHAPE	NEEDLE LENGTH	SUTURE LENGTH	LOOK CODE	ETHICON CODE	NEEDLE IMAGE
34.75	33.59	856-701	5-0	C-6	Reverse	3/8 Cir	18 mm	18"	N/A	J391H	FS-2
34.75	33.59	856-702	4-0	C-6	Reverse	3/8 Cir	18 mm	18"	N/A	J392H	FS-2
34.75	33.59	856-703	3-0	C-6	Reverse	3/8 Cir	18 mm	18"	N/A	J393H	FS-2
34.75	33.59	856-704	2-0	C-21	Reverse	1/2 Cir	26 mm	27"	N/A	J869H	FS
39.68	38.35	856-705	2-0	T-5	Tap	1/2 Cir	20 mm	27"	333B	J328H	CT-3
39.68	38.35	856-706	3-0	T-5	Tap	1/2 Cir	20 mm	27"	311B	J311H	SH-1

Coated Vicryl Type - Undyed Braided, 12 Packs per Box

ONE BOX 12 SUTURES	6 BOXES EACH AT:	O.S.SOURCE CAT. NO.	SUTURE SIZE	NEEDLE CODE	NEEDLE STYLE	NEEDLE SHAPE	NEEDLE LENGTH	SUTURE LENGTH	LOOK CODE	ETHICON CODE	NEEDLE IMAGE
34.75	33.59	856-801	5-0	C-6	Reverse	3/8 Cir	18 mm	27"	421B	J421H	FS-2
34.75	33.59	856-802	4-0	C-6	Reverse	3/8 Cir	18 mm	27"	422B	J422H	FS-2
34.75	33.59	856-803	3-0	C-6	Reverse	3/8 Cir	18 mm	27"	423B	J433H	FS-2
59.40	57.41	856-804	6-0	C-3	Reverse	3/8 Cir	13 mm	18"	492B	J492H	P-3
59.40	57.41	856-805	5-0	C-3	Reverse	3/8 Cir	13 mm	18"	493B	J493H	P-3
59.40	57.41	856-806	4-0	C-3	Reverse	3/8 Cir	13 mm	18"	494B	J494H	P-3

"Sutures are a highly regulated product. The suture materials must conform to strict U.S.P. standards. All suture needles come from the same manufacturer! Every package must be sterilized. All OralSurgerySource suture packs meet these requirements.



The only differences are the expensive and superficial brand name and image. If the products are the same, then the lowest price will be your best value."

Dr. Lloyd Taylor

SUPPLIES

Autoclavable Instrument Pouches

- Best quality transparent FDA and ADA approved pouch at an economical price!
- Pouches are "self-seal" for easy closure and to save time.
- Color changes on indicator after autoclaving.
- Packs of 200 pouches per size.

SPECIAL
Buy 10 of Any Size
Get Another Pack
FREE



Cat. No.	SIZE	PRICE
810-001	2 1/4" x 5"	4.95
810-002	2 3/4" x 10"	5.50
810-003	3 1/2" x 6 1/2"	5.30
810-004	3 1/2" x 10"	5.50
810-006	4 1/4" x 12"	9.30
810-007	5 1/4" x 11"	9.95
810-008	7 1/2" x 13"	19.50
810-009	12" x 18"	64.95

Winged Infusion Sets

- Siliconized 3/4" needles with short bevels and three facet points to minimize chance of vein perforation during insertion.
- Kink resistant 12 inch PVC tubing.
- Sterilized with Ethylene gas; latex and pyrogen free.
- 100 pieces per box.

Gauge	100 pack
19	857-019
21	857-021
23	857-023
25	857-025



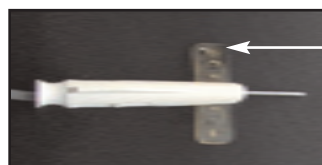
1 to 2 boxes - **\$40.00 each**
3 to 4 boxes - **\$35.00 each**
5 plus boxes - **\$30.00 each**

Safety Infusion Sets

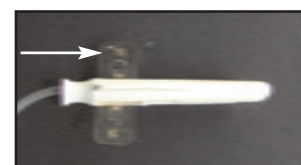
- Same item as Winged Infusion Set, but with addition of safety tube to hold withdrawn needle.
- On withdrawal from vein, 3/4" needle slides into unique locking safety tube to minimize chance of operator injury.
- Kink resistant 12 inch PVC tubing.
- Sterilized with Ethylene gas; latex and pyrogen free.
- 100 pieces per box.

1 to 2 boxes - **\$90.00 each**
3 to 4 boxes - **\$85.00 each**
5 plus boxes - **\$80.00 each**

Gauge	100 pack
19	857-119
21	857-121
23	857-123
25	857-125



1. Before removing needle from vein, remove tape from butterfly and slide safety tube down over butterfly.



2. Gently pull PVC tubing to withdraw needle and butterfly into safety tube where they will lock.

Aspirating Syringe - Astra Type

- Astra type aspirating local anesthetic syringe.

Cat. No. 876-101

1 to 4 - **\$12.00 each**
5 to 9 - **\$11.00 each**
10 plus - **\$10.00 each**



Aspirating Syringe - Cooke-Waite

- Cooke-Waite type aspirating local anesthetic syringe.

Cat. No. 876-102

1 to 4 - **\$12.00 each**
5 to 9 - **\$11.00 each**
10 plus - **\$10.00 each**

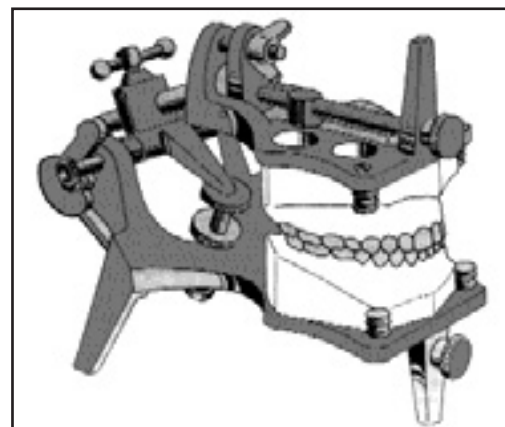


Adjustable

- Models are easily, quickly, and firmly mounted on articulator.
- Does not require plaster or any other accessories.
- Provides full range of adjustable jaw motion.
- Ideal for instant set-up and occlusal check such as orthognathic surgery.
- Appliances like splints and nightguards can be processed directly on articulator.

CAT. NO. 846-440

1 - **\$185.00**



Intra Ligament Syringe

- A unique syringe for intraligament, intrapulpal, and intraosseous injection of carpule anesthetics.
- Unique ratchet design allows for dispensing minute amounts of anesthetic under high pressure resulting in profound anesthesia with little or no discomfort.
- Allows one tooth anesthesia eliminating the lip, tongue and cheek anesthesia of blocks.
- Available in either "pistol" style or hand held model.

Cat. No. 861-103 Intra Ligament Syringe - "pistol" style - **\$77.00 each**

Cat. No. 861-104 Intra Ligament Syringe - hand held model **\$79.00 each**



876-104

876-103

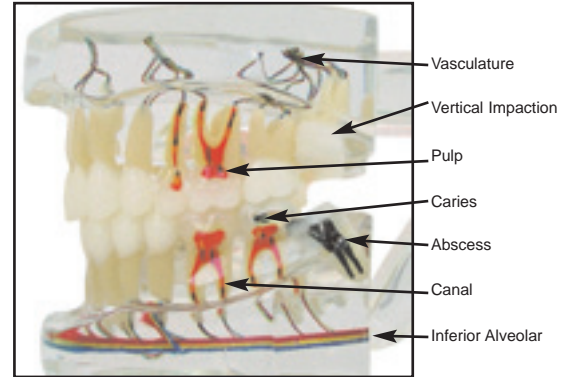
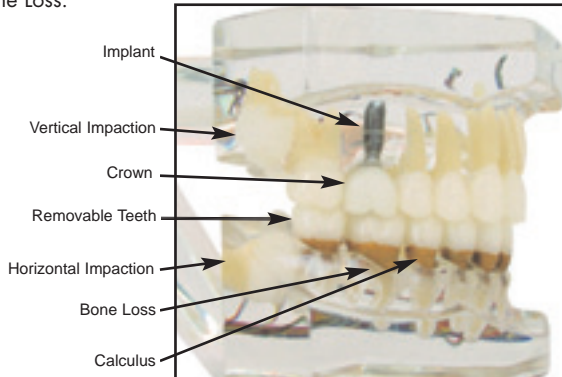
Implant/Third Molars/Pathology Model

- Beautifully articulated Implant/Pathology model.
- Maxillary Right Molar Implant and Crown.
- Four Impacted Third Molars.
- Removable Teeth with Calculus and Bone Loss.
- Pulp and Root Canal anatomy.
- Decay and Pulpal Abscess.
- Suggested Vasculature.

Cat. No. 840-186

1 - 145.00

**BUY 5 OR MORE
IMPLANT MODELS
for only
125.00 EACH**



Very Appreciated Gifts
for Referring Dentists

Topical Anesthetic 30 gm jars

Let your patients choose their favorite flavor from these six delicious topical anesthetic gels. Apply the 20% benzocaine gel to mucous membranes with a cotton applicator to produce rapid and profound topical anesthesia in about ten seconds.

SPECIAL - all six flavors

Cat. No. 588-607 **\$18.00**

588-601	Mint	30 ml jar
588-602	Bubble Gum	30 ml jar
588-603	Banana	30 ml jar
588-604	Strawberry	30 ml jar
588-605	Piña Colada	30 ml jar
588-606	Cherry	30 ml jar

1 - 3.50 each



Six Delicious Topical Anesthetic Gels

Excel Slow Speed Handpieces

Our Micromotor revolving at 5,000 to 20,000 rpm will cover all your slow speed needs. The Latch Contra Angle and Straight Handpiece can be run forward and reverse. All parts are autoclavable. An external water cooling line can be attached to either head.

874-524	Micromotor 4 hole	1 - 148.00	3 - 141.00
874-522	Micromotor 2 hole	1 - 148.00	3 - 141.00
874-531	Latch Contra Angle	1 - 95.00	3 - 90.00
874-532	Straight Handpiece	1 - 110.00	3 - 100.00



Straight Handpiece Attachment



Latch Contra Angle

**SPECIAL
SLOW SPEED HANDPIECE
PLUS STRAIGHT AND CONTRA
\$325**



Micromotor 5,000 to 20,000 rpm

Light Curing Unit

- Rapid and complete curing with 75 watt, 12 volt halogen lamp.
- Autoclavable light guide with 360° turn.
- Individual curing times with beep tone.
- Automatic fan to prevent bulb burn out.
- Available 110 or 220 volt.

110 volt - CAT. NO. 855-380

220 volt

LIST \$399

**SPECIAL
\$299.00**



Caries Development Model

- Contains four large removable hemisectioned teeth in sturdy base.
- Teeth open into 2 parts showing enamel, dentin and pulp.
- Demonstrates: (1) No Caries; (2) Incipient Enamel Caries; (3) Dentin Caries; and (4) Pulp Exposure.



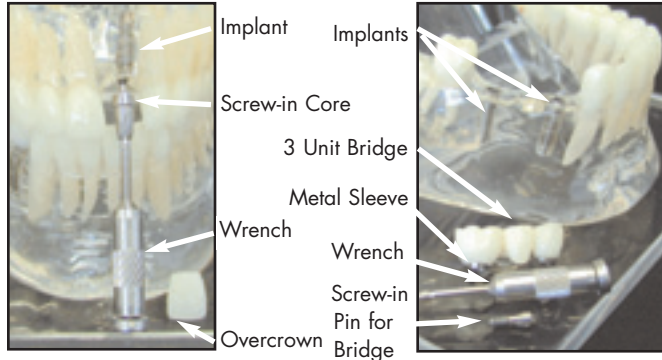
Caries Development Model 840-185 **1 - 140.00**

**5 OR MORE
for only
95.00 EACH**

EDUCATION MODELS

Life-Size Crown & Bridge Implant Model

- Unique anatomic implant model on base with complete mandible and condyles, hinged maxilla which opens, maxillary sinus, zygoma, and nasal floor.
- Clear plastic allows total visualization of teeth and roots so that patient can appreciate anatomic considerations for implant placement.
- Upper Left Central Implant has removable core which unscrews plus esthetic overcrown.
- Lower Right Three Unit Bridge has two implants which hold prosthesis by two removable screws. Crowns have metal sleeves to guide screws into implants. Wrenches are extra.



Crown and Bridge Implant Model 840-180 **1 - 255.00**

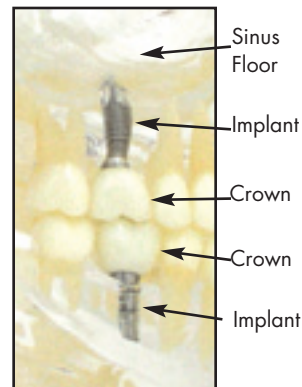
- 1. Completely transparent maxilla and mandible show implants.**
- 2. Maxillary implant has screw-in core plus esthetic overcrown.**
- 3. Mandibular bridge held by 2 implants plus removable screws.**

Life-Size Upper and Lower First Molar Implants and Crowns

- Unique anatomic implant model on base with complete mandible and condyles, hinged maxilla which opens, maxillary sinus, zygoma, and nasal floor.
- Clear plastic allows total visualization of teeth and roots so that patient can appreciate anatomic considerations for implant placement.
- Upper Right and Lower Right First Molar implants with Crowns in Ideal Occlusion.
- The need for adequate bone as well as anatomic limitations can easily be shown to patients.



- 1. Transparent maxilla and mandible show implants.**
- 2. First Molar Implants and Crowns in perfect occlusion.**
- 3. Patients can understand the need for adequate bone.**



First Molar Implant Model 840-183 **1 - 255.00**

LIFE-SIZE IMPLANT MODELS:

1. Full Maxilla - Maxillary Sinus, Nasal Floor, Zygoma.
2. Full Mandible - Lingula, Mental Foramen, Condyles, Inferior Alveolar.
2. Articulated Hinge - Ideal Class I Occlusion.
3. Large Clear Acrylic Base.

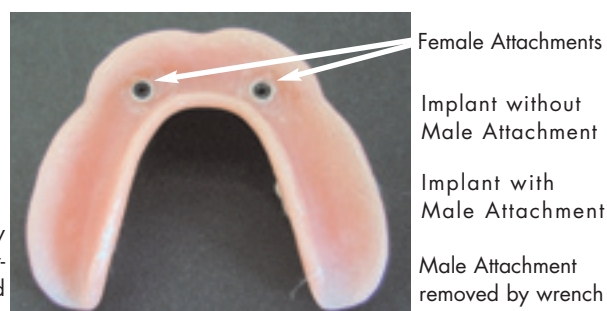
Over Denture Implant Model

- Clear mandibular model with two implants in cuspid areas.
- Complete mandibular denture with embedded female attachments that snap fit onto male attachments which are screwed into implants.

Cat. No. 840-181 **1 - 220.00**

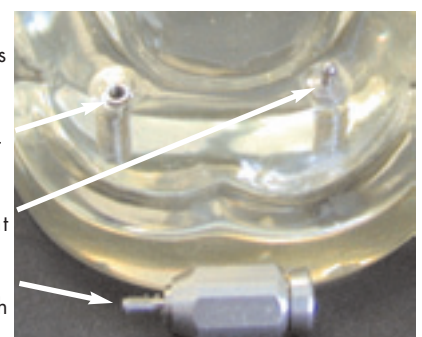


Custom Over Denture is firmly held on model by attachments and implants. Patient can practice removing prosthesis to appreciate the secure retention and



Over Denture Implant Model:

- 1. Provides patient the opportunity to test security and stability of implant prosthesis.**
- 2. Appliance can be removed to appreciate the frictional fit of male and female attachments.**



Labial and Palatal Impacted Cuspids with Gold Buttons and Chain

- Labial and Palatal impacted cuspids with bonded gold buttons are both demonstrated on the same model.
- Full arch orthodontic appliance with cuspids tied to archwire.
- Complete root model demonstrates surgical and orthodontic treatments.

Cat. No. 840-121

1 - 195.00

Demonstrates the surgical attachments and also the orthodontic procedure for treating impacted cuspids.



Cuspid Root
Bonded Gold Button with Chain
Elastic thread to Gold Chain
Space holding archwire

Cat. No. 840-121 Labially impacted cuspid with bonded Gold Button and Chain tied to archwire.



Cat. No. 840-121 Palatally impacted cuspid with bonded Gold Button and Chain tied to archwire.

Space holding archwire
Elastic thread to Gold Chain
Bonded Gold Button with Chain
Cuspid Root



Cat. No. 840-121 Articulated Impacted Cuspid Model with labial and palatal bonded Gold Buttons with Chain and orthodontic appliance.

Impacted Third Molar Model

- Class I Ideal model to demonstrate the need for and technique of removal of impacted third molars.
- Four Impacted Third Molars easily seen in beautiful clear anatomic model on base.
- Full Maxilla with Nasal Cavity, Maxillary Sinuses and Zygomas.
- Mandible articulates and can be totally removed from model for lingual visualization.

Patients can instantly understand the need for removal of Impacted Third Molars to maintain their ideal occlusions.



Maxillary Vertical Impaction
Mandibular Horizontal Impaction



Impacted Third Molar Model
Articulated Mandible Can Be Removed



Impacted Third Molar Model
Cat. No. 840-190 **1 - \$245.00**



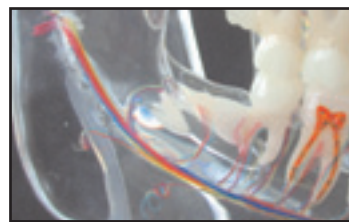
Maxillary Vertical Impaction
Mandibular 45° Impaction

Vascular Models

- Demonstrate artery, vein and nerve innervation of the bone and teeth.
- Excellent for explaining anesthetic techniques, surgery and pain.
- Shows direct pathway from periapical area into the pulp.
- Large model includes movable full mandible with lingula and inferior alveolar artery, vein and nerve.



Small Vascular Model
Cat. No. 840-131 **1 - 145.00**



Ramus of Large Vascular Model
Cat. No. 840-132



Large Vascular Model
Cat. No. 840-132 **1 - 245.00**

ANATOMIC IMPLANT MODELS

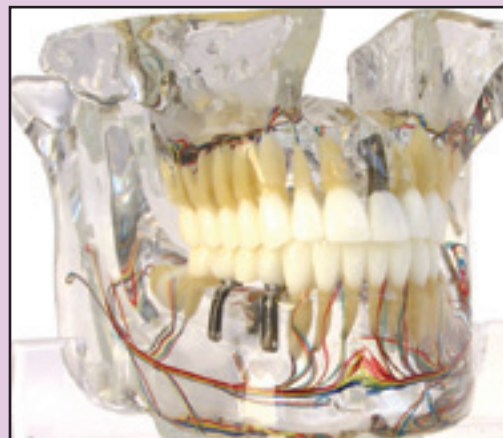
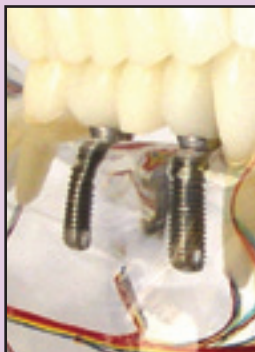
Consultations will have meaning and be accepted when patients can see and touch similar problems.

Life-Size Crown and Bridge Implant Model with Vasculature

- Unique anatomic implant model on base with complete mandible and condyles, hinged maxilla which opens, maxillary sinus, zygoma, and nasal floor.
- Clear plastic allows total visualization of teeth and roots so that patient can appreciate anatomic considerations for implant placement.
- Upper Left Central Implant has removable core which unscrews plus esthetic overcrown.
- Lower Right Three Unit Bridge has two implants which hold prosthesis by two removable screws. Crowns have metal sleeves to guide screws into implants. Wrenches are extra.



Nasal Floor
3 Unit Bridge
Implant
Implants
Post Mental Foramen
Crown Inferior Alveolar



Crown and Bridge Implant Model 840-182 **1 - 295.00**

These spectacular articulating anatomic models with the maxillary sinus and vasculature allow patient to "see" what you are explaining to them. The implants with single and multiple crowns and bridge show them the advantages of implant dentistry over traditional tooth preparation and bridges.

Life-Size Upper and Lower First Molar Implants and Crowns with Vasculature

- Unique anatomic implant model on base with complete mandible and condyles, hinged maxilla which opens, maxillary sinus, zygoma, and nasal floor.
- Clear plastic allows total visualization of teeth and roots so that patient can appreciate anatomic considerations for implant placement.
- Upper Right and Lower Right First Molar implants with Crowns in ideal occlusion.
- The need for adequate bone as well as anatomic limitations can easily be shown to patients.



Sinus Floor
Implant
Crown
Crown
Implant



Molar Vascular Implant Model 840-184 **1 - 295.00**

LIFE-SIZE IMPLANT MODELS:

1. Full Maxilla - Maxillary Sinus, Nasal Floor, Zygoma.
2. Full Mandible - Condyles, Mental Foramen, Inferior Alveolar.
3. Articulated Hinge - Ideal Class I Occlusion.
4. Large Clear Acrylic Base.

SPECIAL
BOTH ANATOMIC IMPLANT
MODELS (List \$590.00)
with VASCULATURE
for only
\$490.00

ORTHO SOURCE

13343 Sherman Way
North Hollywood, California 91605

PRSR STD.
US POSTAGE
PAID
No. Hollywood, CA
Permit #155